

Working with Academic Librarians

Claire Dinkelman & Tara Baillargeon

July 7, 2020

Research and Instructional Services



Librarian liaison for each academic dept



Research support, instruction, and collection development



Digital Scholarship Lab



Information Desk, DS Lab Desk, Chat Help

Marquette.edu // Raynor Memorial Libraries // About Us //

SUBJECT SPECIALISTS / LIAISONS

A - L || M - Z

| Subject, Program, or College | Librarian | Phone (414) | E-mail |
|-----------------------------------|------------------------------|----------------|--------|
| Accounting | Valerie Beech | 288-1998 | e-mail |
| Advertising | Valerie Beech | 288-1998 | e-mail |
| Anthropology | Leatha Miles-Edmonson | 288-7875 | e-mail |
| Biological Sciences | Claire Dinkelman | 288-5214 | e-mail |
| Biomedical Engineering | Nia Schudson | 288-5997 | e-mail |
| Browsing Collection | Mary Frenn | 288-1995 | e-mail |
| Business Administration | Valerie Beech | 288-1998 | e-mail |
| Chemistry | Claire Dinkelman | 288-5214 | e-mail |
| Civil & Environmental Engineering | Nia Schudson | 288-5997 | e-mail |



About Us

- [Dean's Corner](#)
- [Library basics](#)
- [Contacts](#)
- [Library policies](#)
- [Other library information](#)
- [Library collections](#)

HAVE A SUGGESTION?

Range of Instruction Support



Course
guides



Online
modules



Teaching



Consults

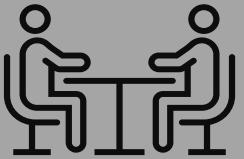


Embedded
in course

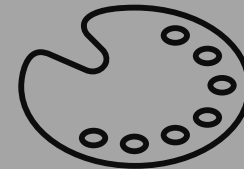


The Librarian is in...

Ask us about:



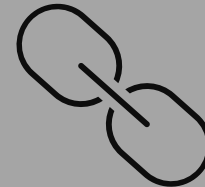
Deciding the level of librarian involvement (if at all!)



Designing assignments using library resources



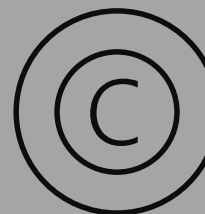
Finding library materials or OER options



Creating/Inserting permalinks



Purchasing materials for class



Advising on basic copyright questions/concerns

Copyright Basics

- Marquette takes a conservative viewpoint of copyright → link to library materials
- Remember **PANE (Fair Use)**
 - Purpose
 - Amount (10% is a myth!)
 - Nature of Work
 - Economic Impact
- We can only advise on risks, we're not lawyers
- Accessibility goes hand in hand with copyright

Online Class Materials

Why use online resources from the library?

- Engagement on **day one**
- Cost effective for students
- Accessible features
- Fewer copyright considerations

eBooks and Streaming Video Options

- Find in catalog or databases
- Request form to purchase
- Able to insert permalink or embed video in D2L
- Limitations lead to opportunities

Digital Scholarship Lab

www.marquette.edu/library/digital-scholarship

A la Carte Workshops

Offered at beginner to low-intermediate levels, these are available as one-one-one sessions or group workshops. Many have been converted to asynchronous online workshops through D2L. Request a workshop or consultation. For questions or more information, contact Elizabeth Gibes, Digital Scholarship Librarian, elizabeth.gibes@mu.edu. A full listing of offerings below.

WORKING WITH DATA

Data Management Basics

Learn about the basics of data management plans, repositories, supporting documentation, and funder mandates. Instructors: Heather James, Katie Blank

Data Visualization for Beginners

Get started with data visualization, including an overview of data cleaning best practices as well as platforms and programs for creating beautiful visualizations.

Customized Course Instruction

Digital Scholarship Lab staff can help you envision a digital assignment for your class. We help identify tools and resources for your students and offer in-class instruction. Request a workshop for your class or a consultation to discuss potential assignments.

Dedicated in-lab workdays with technical assistance are available for all classes. Reserve days for your class to meet in the lab, work with software and equipment with immediate technical assistance. [Reserve Lab Space](#).

GETTING STARTED WITH DIGITAL PROJECTS

If you are assigning a digital project, contact the Digital Scholarship Lab for instruction and support in project planning and introductory concepts.

What is DH? A Digital Humanities Primer

Heard about Digital Humanities but not quite sure what it entails? Learn about the history of DH and explore some exciting digital humanities

In-depth: Interactive Modules

- Insert library widget on D2L homepage
- <https://libguides.marquette.edu/learningobjects/skills-tutorials-d2l>

Academic Library Research 101

Research Process

- Narrowing a Topic
- Selecting sources
- Evaluating sources

Citation Styles

- APA
- Chicago
- MLA

Search Techniques

- Boolean
Commands

In-depth: Instruction

- Synchronous and asynchronous
- One-shot or multiple sessions
- Align with course learning outcomes and assignment
- Flexible and adaptable
- Topic Options (not exhaustive)
 - Intro to the library and specific resources
 - Topic and keyword selection
 - How to “read” a research article
 - Finding and evaluating sources
 - Citation style/citation management program help
 - Course specific: “trailblazers” in chemistry literature, data and statistics for infographics, zip code level data project, DS Lab

What could that actually look like?

- [Academic Library Research 101 Interactive Module](#)
- [BUSI Course Guide](#)
- [CLLS asynchronous lesson plan](#)
- [ENGL 1001 - Fall 2020](#)

Things to Consider

- Your liaison librarian should be your first point of contact
- Librarians work with the library's Technical Services Dept to purchase materials – please be patient and gentle!
- One Size Does Not Fit All – and that's good!

Resources

- **List of all Research Guides:** https://libguides.marquette.edu/course-guides?b=g&d=a&group_id=2019
 - List of all Course Research Guides: https://libguides.marquette.edu/course-guides?b=g&d=a&group_id=2019
 - Online Learning Research Guide: <https://libguides.marquette.edu/c.php?g=764533&p=5484305>
 - Learning Objects Research Guide: <https://libguides.marquette.edu/learningobjects>
 - Durable Links Research Guide: <https://libguides.marquette.edu/c.php?g=36889&p=233893>
 - Designing an Effective Syllabus Guide: <https://libguides.marquette.edu/CTLSyllabus/starthere>
 - Accessibility Research Guide: <https://libguides.marquette.edu/c.php?g=669251&p=4706639>
- **Faculty Guide to Resources:** <https://libguides.marquette.edu/c.php?g=36786&p=233693>
 - Research Services: <https://libguides.marquette.edu/c.php?g=36786&p=844522>
 - Instructional Services: <https://libguides.marquette.edu/c.php?g=36786&p=233697>
- **List of Library Liaisons:**
http://www.marquette.edu/library/about/subjectspec.php?_ga=2.89674015.503021177.1563803423-1035091647.1559335782
- **Org chart for the library:** <https://www.marquette.edu/library/about/orgchartnn.pdf>

Resources

○ List of eBook Research Guides:

○ List of eBook collections (major platforms and subject specific areas):
<https://libguides.marquette.edu/ebook-collections>

○ Helpful “how-to” info for accessing, reading, and downloading eBooks:
<https://libguides.marquette.edu/c.php?g=36951&p=234072>

○ Streaming Video Research Guide:

○ <https://libguides.marquette.edu/streamingvideo/start>

○ A-Z Database List (filtered):

○ eBook: <https://libguides.marquette.edu/az.php?t=36457>

○ Multimedia (including video): <https://libguides.marquette.edu/az.php?t=36460>

Questions?

Claire Dinkelman

Claire.Dinkelman@Marquette.edu

Tara Baillargeon

Tara.Baillargeon@marquette.edu